

Corbin Mountain

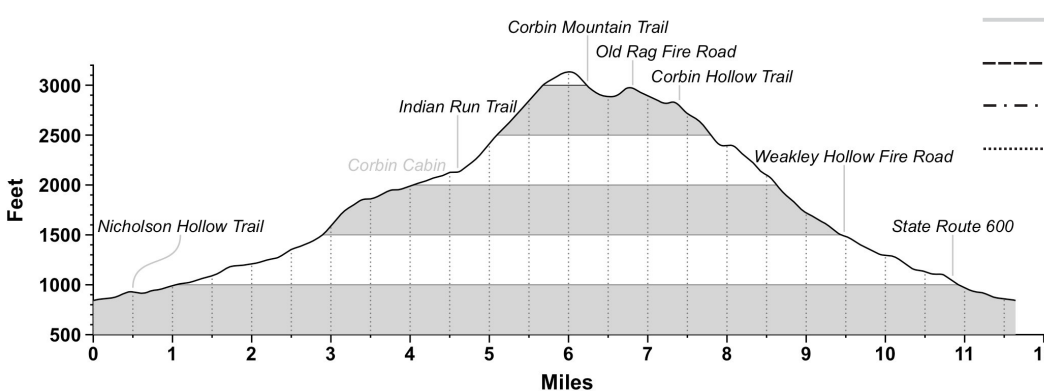
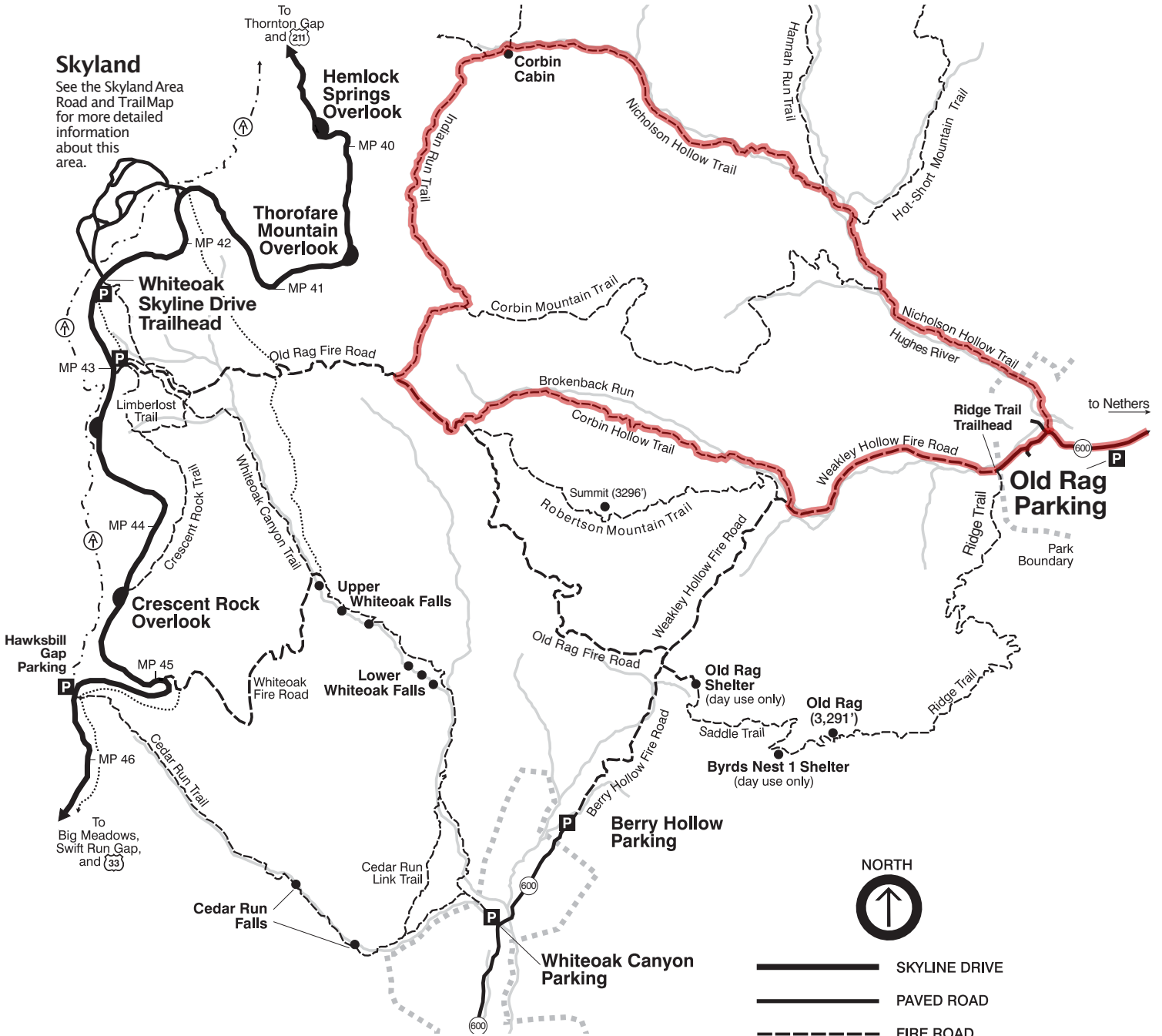
An 11-mile loop exploring the old farmsteads of Nicholson Hollow.

For more information please visit old-rag.com

Look for Trail Markers



You'll find these trail markers at all trailheads and intersections. The metal bands are stamped with directional and mileage information.



- SKYLINE DRIVE
- PAVED ROAD
- FIRE ROAD
- STREAM
- FOOT TRAIL (BLUE BLAZE)
- APPALACHIAN TRAIL (WHITE BLAZE)
- HORSE TRAIL (YELLOW BLAZE)